

# Environmental performance in construction activities

Every project undertaken by Ferrovial implements an Environmental Management Plan, customized according to the features of the location, which determines proper environmental performance, by means of a previous evaluation of the environmental impact of the work, or the establishment of environmental objectives, among other requirements.

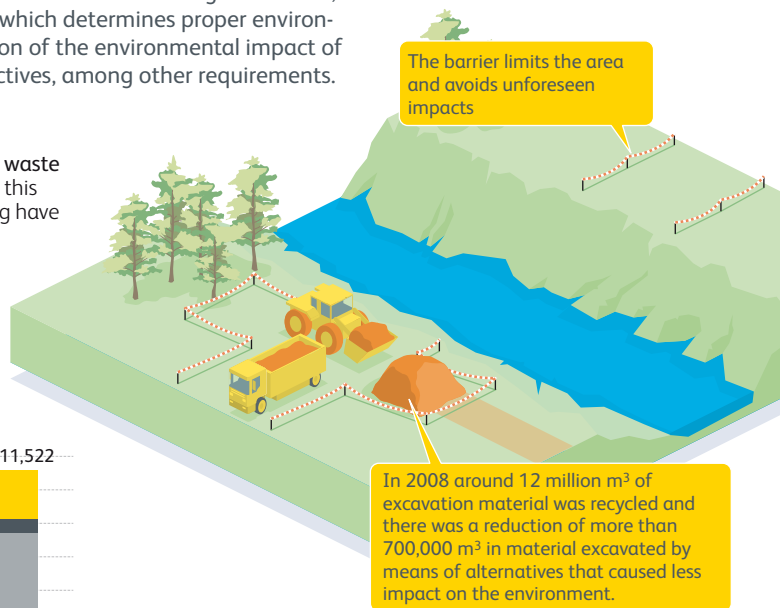
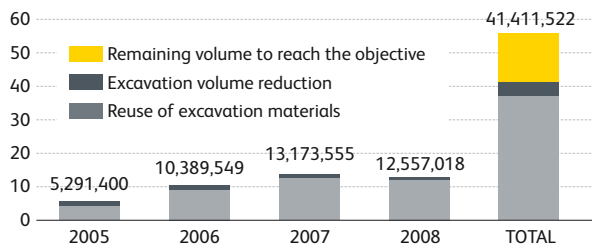
## Waste minimization

One of the priorities in this area is the minimization of waste sent to landfill coming from construction activities. For this purpose, initiatives aiming at waste reduction or recycling have been undertaken.

For the period between 2005 and 2012 there is an objective to reduce the volume of construction waste sent to landfill by 56 million cubic meters.

### Reduction of waste sent to landfill

In million cubic meters



As of year end, there has been a reduction of 41.4 million cubic meters of material sent to landfill.

## Restoration of the site

This is a crucial step before the delivery of the project. One of our concerns is that not only is the operation carried out in the best possible way, but also to make it sustainable in the long-term and in relation to its use of resources such as water, substrate, seeds or seedlings.

Part of our objectives are based on the proposal of technical improvements to the project, such as the use of existing roads and tracks as routes to the site, in order to avoid opening new access routes (35,900 m in 2008), replanting with species of low water consumption (10,000 m<sup>2</sup> in 2008) and native species (76,195 units).

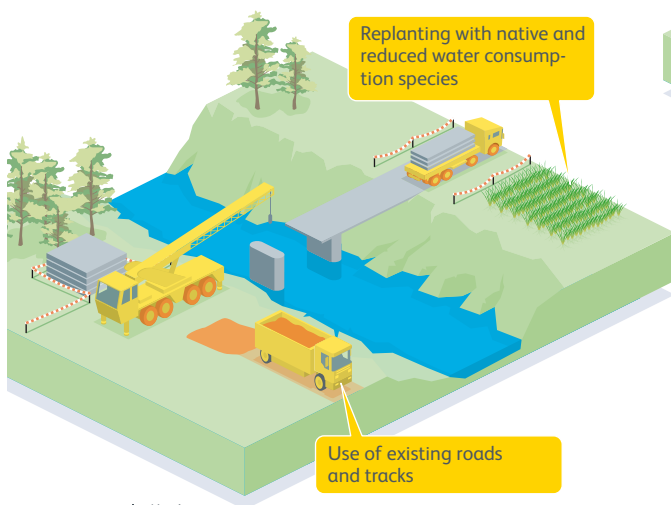
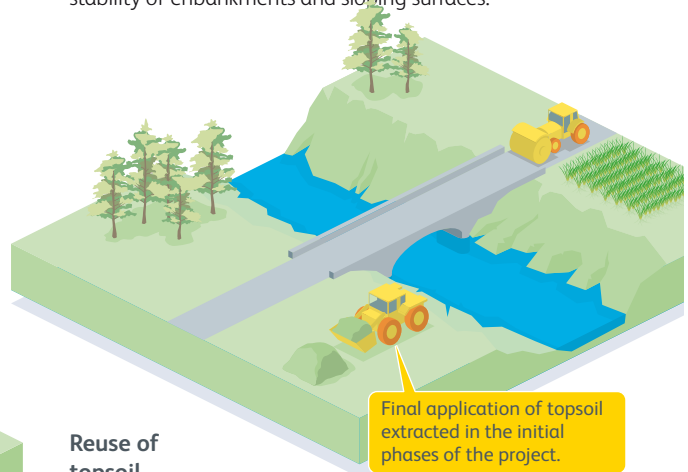


Illustration: visual@thinking

## Topsoil

Proper management of topsoil from its extraction during excavation until its final application, is a key factor for successful restoration because this material is an autochthonous seed bank and the substrate that will guarantee the stability of embankments and sloping surfaces.



### Reuse of topsoil

In million cubic meters

The volume of topsoil reused has decreased due to the decrease of contracts undertaken in 2008.

